

2019 WOTA KALENDA



WOTA LONG HAOS

Boelem wota
oltaem bifo yu drink.



Storem wota
long wan klin
kontena mo kavremap.



Ofem gud tap blong wota
oltaem afta we yu yusum.



JENUARI
JANVIER
JANUARY

Mon Lun	Tue Mar	Wed Mer	Thu Jeu	Fri Ven	Sat Sam	Sun Dim
	01 <small>New Year's Day</small>	02	03	04	05	06
07	08	09	10	11	12	13
14	15	16	17	18	19	20
21	22	23	24	25	26	27
28	29	30	31			

WOTA LONG KITJIN



Yusum klin mo sef wota oltaem blong wasem kakae.

Wasem ol frut mo vejetebol bifo yu kukum o kakae.

Priperem kakae blong yu long klin ples oltaem.



FEBRUARI
FÉVRIER
FEBRUARY

Mon Lun	Tue Mar	Wed Mer	Thu Jeu	Fri Ven	Sat Sam	Sun Dim
				1	2	3
4	5	6	7	8	9	10
11	12	13	14	15	16	17
18	19	20	21 <small>Tru Wokim Day</small>	22	23	24
25	26	27	28			

WOTA LONG KITJEN

Yusum **klin** mo sef wota
oltaem blong **kuk**.



Kavremap gud ol kakae
blong flae oli no sitaon long hem.

Mekem sua se kakae
i tan gud bifo yu kakae.



Yusum **klin** mo sef wota blong
wasem ol kap, plet, sospen.

MAJ
MARS
MARCH

Mon Lun	Tue Mar	Wed Mer	Thu Jeu	Fri Ven	Sat Sam	Sun Dim
				1	2	3
4	5 <small>Custom Craft Day</small>	6	7	8	9	10
11	12	13	14	15	16	17
18	19	20	21	22 <small>World Water Day</small>	23 <small>World Malaria Day</small>	24
25	26	27	28	29	30	31

WASEM HAN

Wasem han wetem wota mo sop o asis blong faea

bifo yu priperem kakae



bifo yu fidim bebe
afta we yu jenisim
napkin blong bebe

bifo mo afta yu kakae

EPREL
AVRIL
APRIL

En blong Saehlon Sisen

Mon Lun	Tue Mar	Wed Mer	Thu Jeu	Fri Ven	Sat Sam	Sun Dim
01	02	03	04	05	06	07 <small>World Health Day</small>
08	09	10	11	12	13	14
15	16	17	18	19 <small>Good Friday</small>	20	21
22 <small>Easter Monday</small>	23	24	25	26	27	28
29	30					

WASEM HAN

Wasem han wetem wota mo sop o asis blong faea

afta yu finisim wok



afta yu tajem
ol animol



afta yu
yusum toelet

Swim evri dei wetem klin wota mo sop.

MEI
MAI
MAY

Mon Lun	Tue Mar	Wed Mer <small>Fete du Travail Labour Day</small>	Thu Jeu	Fri Ven	Sat Sam	Sun Dim
		01	02	03	04	05
06	07	08	09	10	11	12
13	14	15	16	17	18	19
20	21	22	23	24	25	26
27	28 <small>Wesitid Hygiene Day</small>	29	30 <small>Armasas Day</small>	31		

HAEJIN BLONG OL PIKININI



Yusum **klin** hanketjif evri dei



Brasem tut **3 taem**
long wan dei



Dresem soa wetem **klin** plasta mo bandej

Yusum klin kontena
blong putum kakae
blong pikinini



JUN
JUIN
JUNE

Mon Lun	Tue Mar	Wed Mer	Thu Jeu	Fri Ven	Sat Sam	Sun Dim
					01	02
03	04	05 <small>World Transplant Day</small>	06	07	08	09
10	11	12	13	14	15	16
17	18	19	20	21	22	23
24	25	26	27	28	29	30

TOELET

Klinim gud toelet blong yu oltaem.



I mas kat wan lid long ples blong sidaon mo wan gudfala doa.



I mas kat inaf wota mo sop oltaem kolosap long toelet blong wasem han.



JULAE
JUILLET
JULY

Mon Lun	Tue Mar	Wed Mer	Thu Jeu	Fri Ven	Sat Sam	Sun Dim
01	02	03	04	05	06	07
08	09	10	11	12	13	14
15	16	17	18	19	20	21
22	23	24 <small>Children's Day</small>	25	26	27	28
29	30 <small>Independence Day</small>	31				

WANEM BLONG MEKEM LONG TAEM BLONG DISASTA

Fiksim tap blong wota we i stap
lik blong no westem wota from
wota hem i impoten tumas.



Yusum klin kontena blong
karemaot wota, yu no pusum
han insaed long kontena.

Mekem sua se i kat
inaf kakae mo wota
long kontena we i kat lid.



OGIS
AOUT
AUGUST

Mon Lun	Tue Mar	Wed Mer	Thu Jeu	Fri Ven	Sat Sam	Sun Dim
			01	02	03	04
05	06	07	08	09	10	11
12	13	14	15 <small>Assassination Day</small>	16	17	18
19	20	21	22	23	24	25
26	27	28	29	30	31	

WANEM BLONG MEKEM LONG TAEM BLONG DISASTA

Priperem wan imejensi bag we i kat
botel wota, redio, batri, toj laet, matjes
sop, meresin, ol impoten pepa, sola laet.



SEPTEMBER
SEPTEMBRE
SEPTEMBER

Mon Lun	Tue Mar	Wed Mer	Thu Jeu	Fri Ven	Sat Sam	Sun Dim
						01
02	03	04	05	06	07	08
09	10	11	12	13	14	15
16	17	18	19	20	21	22
23	24	25	26	27	28	29
30						

WANEM BLONG MEKEM LONG TAEM BLONG DISASTA

Klinim gud tank
mo net antap
long tank.



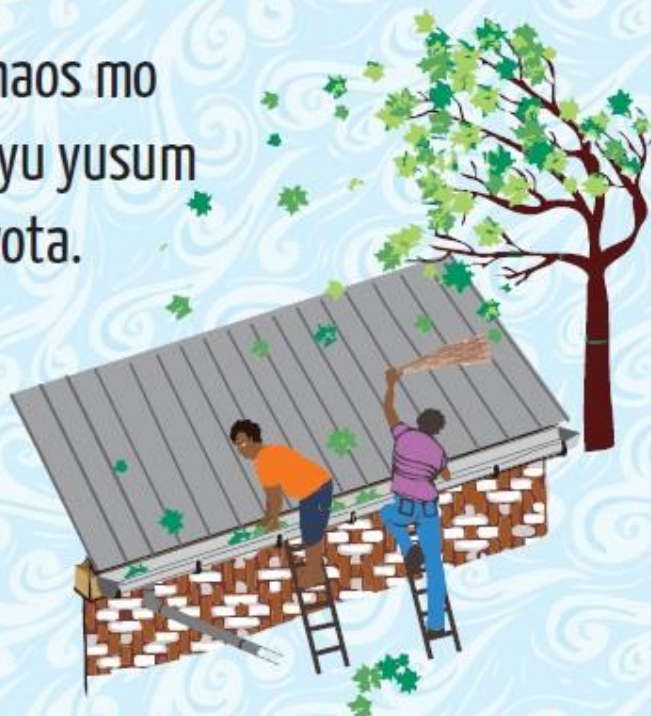
Kavremap wota tank
mo wel blong yu
oltaem.

OKTOBA
OCTOBRE
OCTOBER

Mon Lun	Tue Mar	Wed Mer	Thu Jeu	Fri Ven	Sat Sam	Sun Dim
	01	02	03	04	05 <small>Labour Day</small>	06
07	08	09	10	11	12	13
14	15 <small>Week Free Holiday Day</small>	16	17	18	19	20
21	22	23	24	25	26	27
28	29	30	31			

WANEM BLONG MEKEM LONG TAEM BLONG DISASTA

Klinim gud ruf blong haos mo
spoot blong wota we yu yusum
blong kolektem ren wota.



Klinim mo riperem gud
wota gata blong haos.

NOVEMBA
NOVEMBRE
NOVEMBER

Stat blong Saeklon Sisen

Mon Lun	Tue Mar	Wed Mer	Thu Jeu	Fri Ven	Sat Sam	Sun Dim
				01	02	03
04	05	06	07	08	09	10
11	12	13	14	15	16	17
18	19 <small>World Toilet Day</small>	20	21	22	23	24
25	26	27	28	29 <small>Unity Day</small>	30	

WANEM BLONG MEKEM LONG TAEM BLONG DISASTA

Sapos i kat nid blong go long
narafala ples we i moa sef

Ofem pawa, gas, wota,
Fasem lif kokonas antap long haos
mo lokem haos taem yu go.



Ofem
pawa



Ofem
gas



Ofem
wota

Muv i go long wan ples
we hem i sef.

DISEMBA
DECEMBRE
DECEMBER

Mon Lun	Tue Mar	Wed Mer	Thu Jeu	Fri Ven	Sat Sam	Sun Dim
						01
02	03	04	05	06	07	08
09	10	11	12	13	14	15
16	17	18	19	20	21	22
23	24	25 <small>Christmas Day</small>	26 <small>Family Day</small>	27	28	29
30	31					

BILDIM TIPITAP BLONG YUMI

Wanem yu nidim blong mekem tipitap



2 stik blong 2 mita we i gat fok long wan en.
+ 2 stik blong 1 mita



Sped mo savel

Kontena blong wota



Ston mo korel



Ol smol rop



Sop



Nil, Kandel, Matjes

Hao blong mekem tipitap

1. Digim hol haf mita dip mo 1 mita dip long spes.



2. Planem tufala pos mo mekem sua se tufala pos i stanap stret.



3. Berem hol mo pos wetem graon mo ston.



4. Bonem nil mo mekem hol long kontena olsem we aro i soem.



5. Mekem hol long sop mo fasem rop long hem.



6. Hangem sop mo kontena we i gat wota insaed long stik antap.



7. Fasem wan en blong rop long kontena mo fasem narafala en long stik we i stap long graon.



8. Digim hol andanit mo fulumap wetem ston mo korel blong wota i lus insaed.



WASHU
WASH Sector
Water Sanitation Hygiene

www.wash.vu