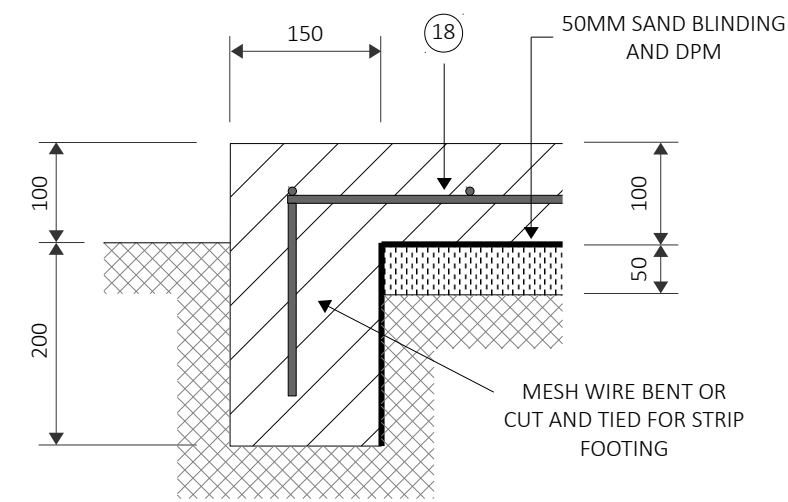
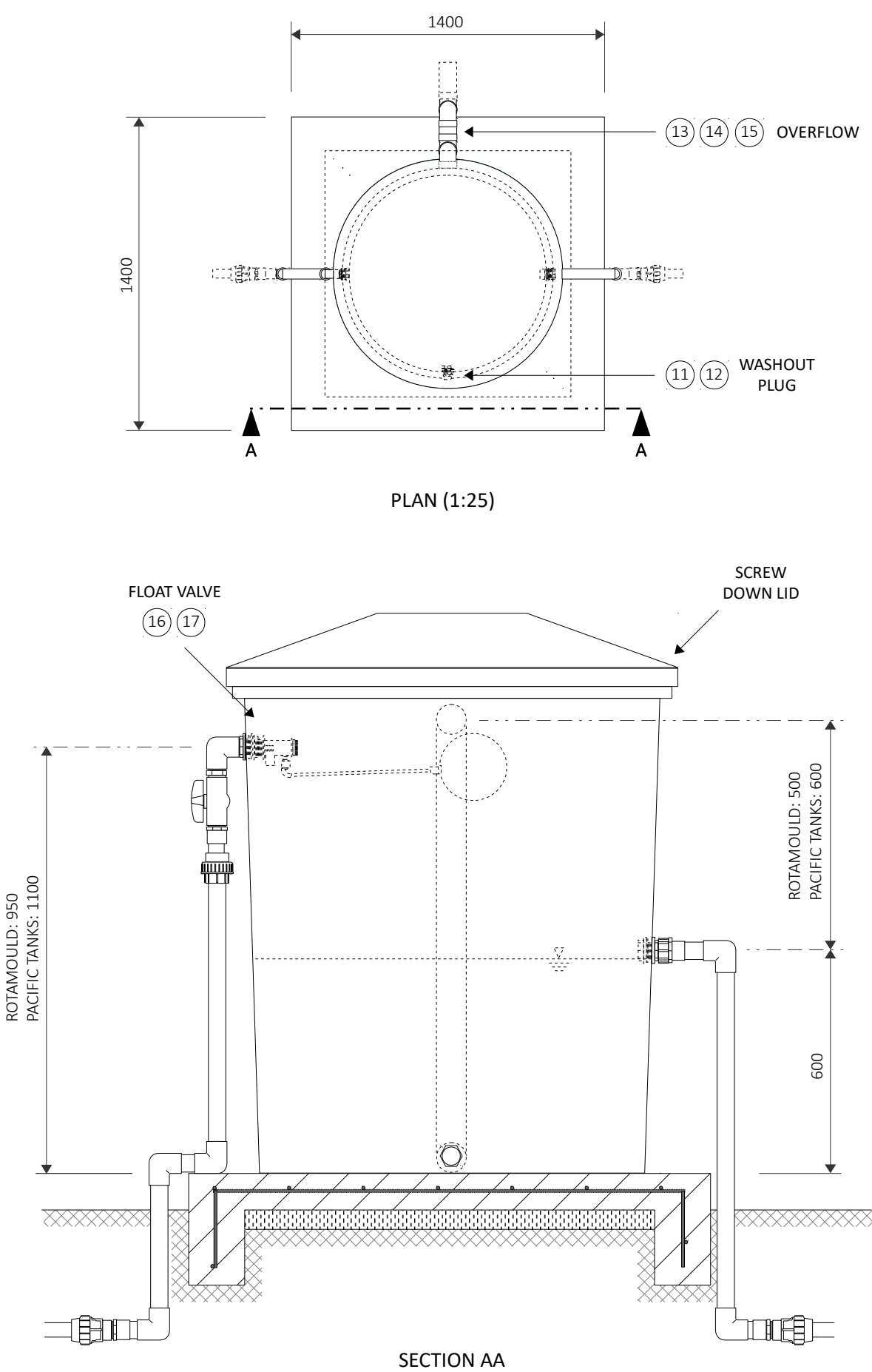


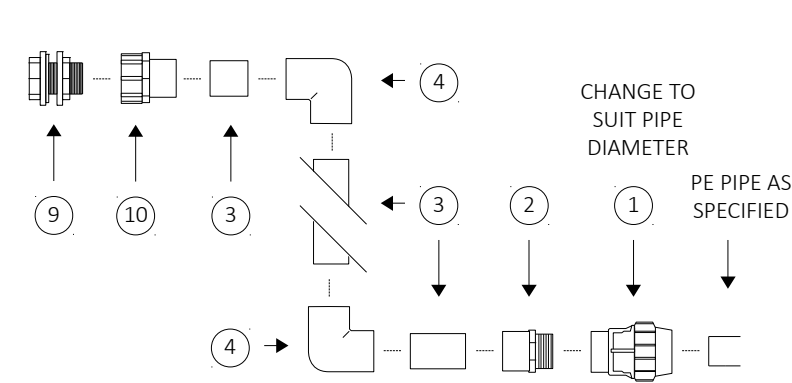
|                  | REF | ITEM                                      | UNIT      | QTY |
|------------------|-----|---|-----------|-----|
| INLET AND OUTLET | 1   | Polyethylene F Adapter ____mm x 1-½"      | each      | 2   |
|                  | 2   | PVC Pressure Valve Socket 40mm x 1-½"     | each      | 3   |
|                  | 3   | PVC Pressure Pipe 40mm SWJ Class 12       | 3m length | 1   |
|                  | 4   | PVC Pressure Plain Elbow 40mm 90D         | each      | 5   |
|                  | 5   | PVC Pressure Barrel Union 40mm            | each      | 1   |
|                  | 6   | PVC Pressure Ball Valve 1 ½" F-F Threaded | each      | 1   |
|                  | 7   | PVC Pressure Nipple 1-½"                  | each      | 1   |
|                  | 8   | PVC Pressure Threaded Elbow 1-½" F-F      | each      | 1   |
|                  | 9   | Brass Tank Flange 1-½"M x 1-¼"F           | each      | 2   |
|                  | 10  | PVC Pressure Faucet Socket 40mm x 1- ½"   | each      | 1   |
| WASHOUT          | 11  | Brass Tank Flange ¾"M x ½"F               | each      | 1   |
|                  | 12  | Polypropylene End Cap 20mm                | each      | 1   |
| OVERFLOW         | 13  | PVC DWV Tank flange 80mm                  | each      | 1   |
|                  | 14  | PVC DWV Pipe 80mm SCJ                     | 6m length | 1   |
|                  | 15  | PVC DWV Plain Elbow 80mm 90D              | each      | 5   |
| FLOAT VLAVE      | 16  | Brass Bush 1-¼ "x 1"                      | each      | 1   |
|                  | 17  | Brass Float Valve 1" M w/ Lever and Float | each      | 1   |
| TANK AND SLAB    | -   | Polyethylene Tank 1,100L                  | each      | 1   |
|                  | 18  | Welded Mesh 200 x 200 6.00mm (SL62)       | 2.4 x 6m  | 0.4 |
|                  | -   | Portland Cement Bag 40kg                  | 40kg bag  | 4   |
|                  | -   | Coarse White Sand                         | kg        | 230 |
| CONSUMABLES      | -   | Stone/Coral Aggregate                     | kg        | 460 |
|                  | -   | Timber Rough-Sawn Softwood 100 x 50mm     | 3m length | 1   |
|                  | -   | Timber Rough-Sawn Softwood 200 x 25mm     | 3m length | 2   |
|                  | -   | PVC Solvent Cement Type N (non-pressure)  | 250 mL    | 1   |
|                  | -   | PVC Solvent Cement Type P (pressure)      | 250 mL    | 3   |
|                  | -   | PVC Priming Fluid                         | 250 mL    | 1   |
|                  | -   | Nail Galvanised Jolt Head 75 x 3.15mm     | kg        | 0.5 |
|                  | -   | Polyethylene Builders Plastic 200um 1.2m  | m         | 8   |



FOOTING DETAIL (1:8)

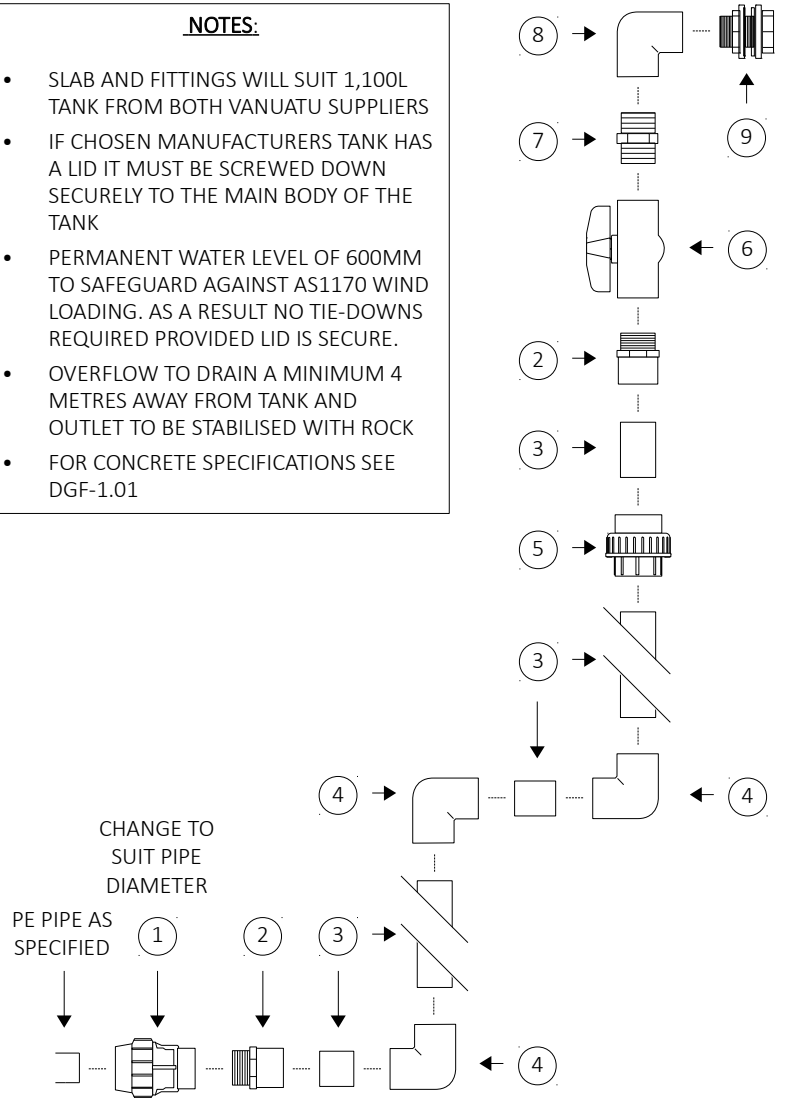


SECTION AA




OUTLET ASSEMBLY (1:10)

- NOTES:**
- SLAB AND FITTINGS WILL SUIT 1,100L TANK FROM BOTH VANUATU SUPPLIERS
  - IF CHOSEN MANUFACTURERS TANK HAS A LID IT MUST BE SCREWED DOWN SECURELY TO THE MAIN BODY OF THE TANK
  - PERMANENT WATER LEVEL OF 600MM TO SAFEGUARD AGAINST AS1170 WIND LOADING. AS A RESULT NO TIE-DOWNS REQUIRED PROVIDED LID IS SECURE.
  - OVERFLOW TO DRAIN A MINIMUM 4 METRES AWAY FROM TANK AND OUTLET TO BE STABILISED WITH ROCK
  - FOR CONCRETE SPECIFICATIONS SEE DGF-1.01



INLET ASSEMBLY (1:10)

|          |          |      |                 |                |                                       |                |   |                                 |       |
|----------|----------|------|-----------------|----------------|---------------------------------------|----------------|---|---------------------------------|-------|
| REVISION | Date     | Name | Description     | Owner:         | Vanuatu Department of Water Resources | Drawing Name : |  <b>POLY BREAK-PRESSURE TANK</b> | Drawing No. : <b>DGF – 1.06</b> |       |
|          | 28/08/18 | KD   | PIPE: GI TO PVC | Project Name : | DGF Standard Drawings                 |                |   | Paper Size & Scale              | REV 2 |
|          |          |      |                 | Drafter:       | K. Davis 25/07/18                     | Checked:       |   | A3                              | 1:15  |
|          |          |      |                 |                | G. Longman 29/08/18                   | Plot Date :    |   |                                 |       |