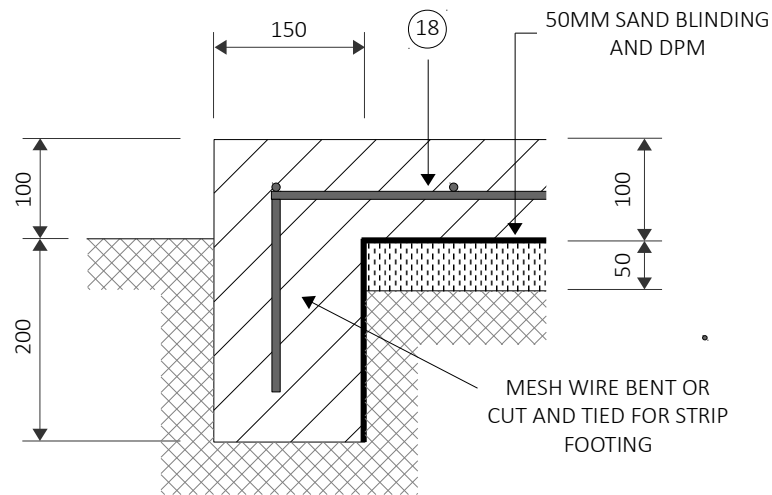
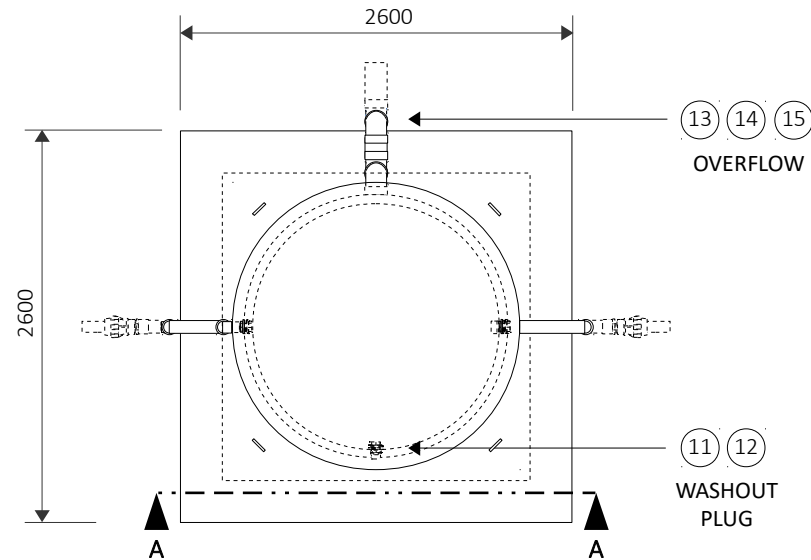


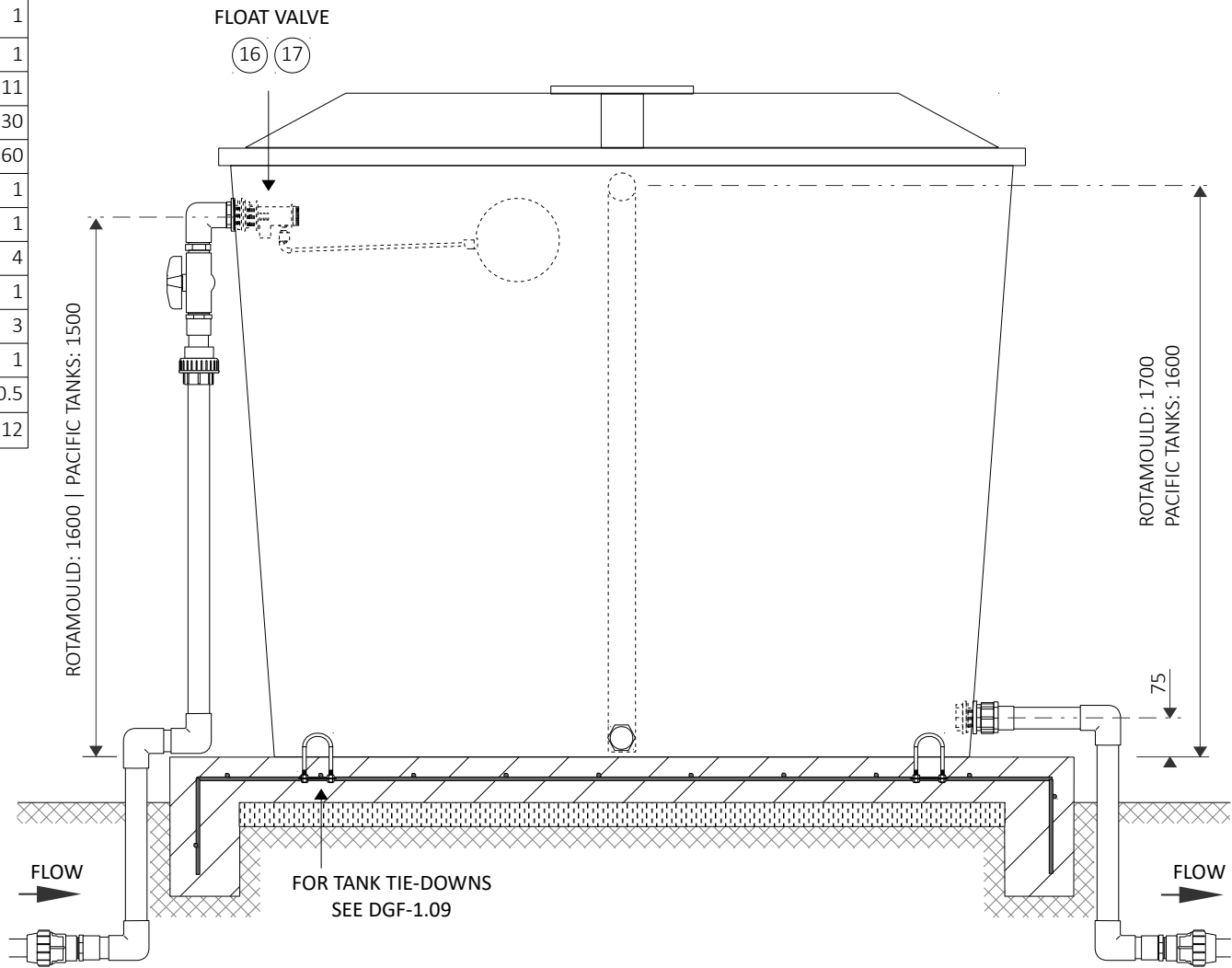
	REF	ITEM	UNIT	QTY
INLET AND OUTLET	1	Polyethylene F Adapter ____mm x 2"	each	2
	2	PVC Pressure Valve Socket 50mm x 2"	each	3
	3	PVC Pressure Pipe 50mm SWJ Class 12	4m length	1
	4	PVC Pressure Plain Elbow 50mm 90D	each	5
	5	PVC Pressure Barrel Union 50mm	each	1
	6	PVC Pressure Ball Valve 2" F-F Threaded	each	1
	7	PVC Pressure Nipple 2"	each	1
	8	PVC Pressure Threaded Elbow 2" F-F	each	1
	9	Brass Tank Flange 2"M x 1-½"F	each	2
	10	PVC Pressure Faucet Socket 50mm x 2"	each	1
WASHOUT	11	Brass Tank Flange ¾"M x ½"F	each	1
	12	Polypropylene Threaded End Cap ¾"	each	1
OVER-FLOW	13	PVC DWV Tank flange 80mm	each	1
	14	PVC DWV Pipe 80mm SCJ	6m length	1
	15	PVC DWV Plain Elbow 80mm 90D	each	5
FLOAT VLAVE	16	Brass Bush 1-½"x 1"	each	1
	17	Brass Float Valve 1" Male w/ Lever and Float	each	1
TANK AND SLAB	-	Polyethylene Tank 6,000L	each	1
	18	Welded Mesh 200 x 200 x 6.00mm (SL62)	2.4 x 6m	1
	-	Portland Cement Bag 40kg	40kg bag	11
	-	Coarse White Sand	kg	730
	-	Stone/Coral Aggregate	kg	1460
CONSUMA BLES	-	Rebar Tie/Binding Wire 1.57mm	kg	1
	-	Timber Rough-sawn Softwood 100 x 50mm	3m length	1
	-	Timber Rough-sawn Softwood 200 x 25mm	3m length	4
	-	PVC Solvent Cement Type N (non-pressure)	250 mL	1
	-	PVC Solvent Cement Type P (pressure)	250 mL	3
	-	PVC Priming Fluid	250 mL	1
	-	Nail Galvanised Jolt Head 75 x 3.15mm	kg	0.5
	-	Polyethylene Builders Plastic 200um 1.2m	m	12



FOOTING DETAIL (1:8)

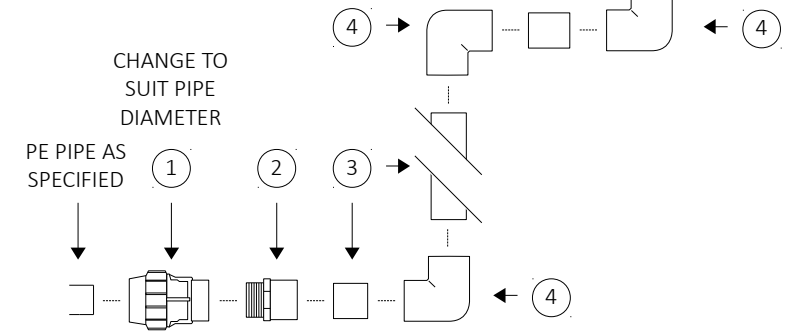


PLAN (1:50)

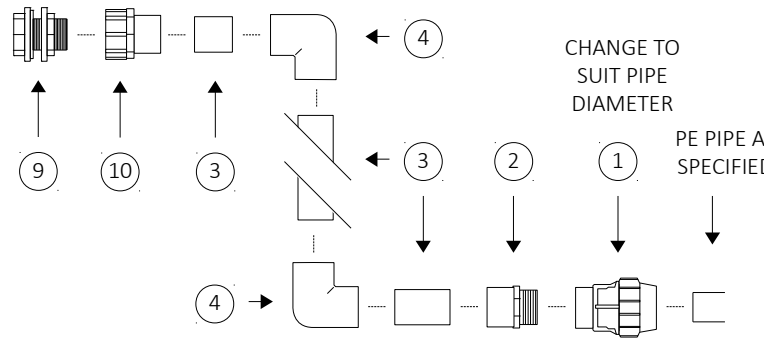


SECTION AA


- NOTES:**
- SLAB AND FITTINGS WILL SUIT 6,000L TANK FROM BOTH VANUATU SUPPLIERS
 - IF SELECTED MANUFACTURERS TANK HAS A REMOVABLE LID IT MUST BE SCREWED DOWN SECURELY TO THE MAIN BODY OF THE TANK
 - OVERFLOW TO DRAIN A MINIMUM 4 METRES AWAY FROM TANK AND OUTLET TO BE STABILISED WITH ROCK
 - FOR CONCRETE SPECIFICATIONS SEE DGF-1.01
 - TANK TIE-DOWNS MUST BE INSTALLED ON ALL DISTRIBUTION TANKS. FOR A GENERIC TIE DOWN ASSEMBLY SEE DGF-1.09
 - WELDED MESH LAPPED MIN 300MM



INLET ASSEMBLY (1:10)



OUTLET ASSEMBLY (1:10)

REVISION	Date	Name	Description	Owner:	Vanuatu Department of Water Resources	Drawing Name : 6kL POLY DISTRIBUTION TANK		Drawing No. : DGF – 1.07	
	25/10/18	KD	PIPE: GI TO PVC	Project Name :	DGF Standard Drawings			Paper Size & Scale	REV 2
				Drafter:	K. Davis 23/07/18			A3	1:20
				Checked:	G. Longman 30/10/18				